



Webbs

Helping people move since 1994

Langdale Green | Cannock | WS11 1QS

£1,100 PCM

 Webbs
estate agents

Summary

Webbs Estate Agents are pleased to offer for rent a well-presented, spacious home offering easy access to schools, transport links, local shops and amenities.

In brief ,the downstairs consisting of an entrance porch and hallway, guest WC, kitchen and a spacious lounge diner has patio doors to the rear garden and stairs to the first floor.

To the first floor there are three generous-sized bedrooms and a family bathroom.

The enclosed landscaped rear garden has display borders and gated access to the rear.

Key Features

Rooms and Dimensions

PROPERTY DETAILS:

KITCHEN

9'7" x 8'11" (2.94m x 2.72m)

SPACIOUS LOUNGE DINER

15'5" x 15'10" (4.72m x 4.83m)

BEDROOM ONE

13'2" x 9'7" (4.03m x 2.93m)

BEDROOM TWO

11'6" x 9'7"ax 7'1" min (3.52 x 2.93max 2.166 min)

BEDROOM THREE

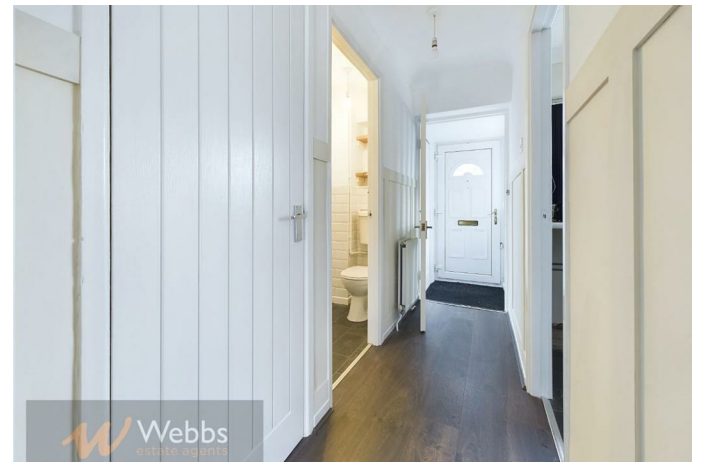
8'3" x 8'3" (2.516 x 2.522)

FAMILY BATHROOM

5'11" x 5'6" (1.81m x 1.68m)

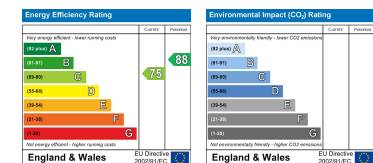
TENANCY INFORMATION & IMPORTANT NOTES







Webbs Estate Agents - endeavour to maintain accurate depictions of properties in Virtual Tours, Floor Plans and descriptions, however, these are intended only as a guide and purchasers must satisfy themselves by personal inspection.



153 Avon Road, Cannock, WS11 1LF

Tel: 01543 468846 | Email: sales@webbsestateagents.co.uk | www.webbestateagents.co.uk

